



# MCAS Yuma Range Aircrew Safety Brief



# OVERVIEW

- **Check In/Out Procedures**
- **Aircraft Restricted Airspace Access**
- **Restricted Airspace:**
  - R-2301W
  - R-2507N/S/E
  - R-2507W
  - Camp Billy Machen and Naval Special Warfare Training  
SWAT Ranges**
  - R-2512
  - R-2510 A/B
- **Interlopers Within the Range**
- **General Information**

# AIRCREW RANGE SAFETY BRIEF

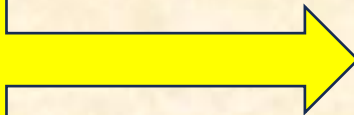
**\*\*All participants are required to read this brief\*\***

- Brief is current as of January 2024.
- Prior to take-off, check with range scheduling to ensure your ranges are approved/scheduled, and air delivered ordnance conforms with all range Regulations.
- Preapproved Wdz profiles are available in the RFMSS Library for a number of platforms and weapons. New requested Wdz profiles require 5 business to validate. If using one located in the RFMSS Library, please use the following acknowledgement in the communications tab in your RFMSS requests, "All ordnances releases will be IAW approved Wdz profiles provided in the MCAS Yuma RFMSS Library".
- Pilots shall review the MCAS Yuma Range Notifications Webpage <http://www.mcasyma.marines.mil/Resources/RangeNotifications.aspx> and applicable NOTAMS (KNYL AND KNJK) prior to flight.
- Units have a 15-minute grace period to check into scheduled ranges.
- After 15 minutes, the ranges are made available to other users, unless units running late have coordinated with LEG IRON, in order to preserve their scheduled ranges.

# Range Notifications Webpage

- Pilots shall review the MCAS Yuma Range Notifications WebPage
- <http://www.mcasyuma.marines.mil/Resources/RangeNotifications.aspx> and applicable NOTAMS (KNYL AND KNJK) prior to flight.

Use your cell phone camera  
to access Yuma Range  
Notifications Webpage.





# CHECK IN/OUT PROCEDURES

- Fixed Wing/Tilt Rotor Aircraft **shall** contact “YUMA RANGE” on 276.0 or 124.15, Rotary Wing Aircraft **shall** contact “LEG IRON” on 310.0.
- Aircraft requesting to conduct operations in Special Use Airspace must receive a clearance.
- Minimum information required to receive a Range Clearance is as follows:
  - Aircraft Callsign
  - Number in flight
  - Tactical Frequency
  - Ordnance on board
- Scheduling airspace does not constitute a clearance. Target operators/scorers cannot issue clearance to enter.
- Clearances must be received from “YUMA RANGE”/“LEG IRON”, in real time, as aircraft are entering the airspace and are required to follow all MCAS Yuma check in and check out procedures. There is no direct entry from military training routes, unless a clearance has been received from “YUMA RANGE” control.
- Upon completion of training, all aircraft shall checkout with “YUMA RANGE”/“LEG IRON” and provide utilization data before switching over to the appropriate ATC agency.

# **ROTARY WINGED AIRCRAFT RESTRICTED AIRSPACE ACCESS**

- **All Rotary Winged aircraft (Non Tilt-Rotor) seeking access to R-2301W, R-2507N/S/E/W, R-2512 and R-2510 will check in with “LEG IRON” on frequency 310.0.**
- **LEG IRON will coordinate clearance and assignment of Mode III to Rotary Winged aircraft seeking access to restricted airspace.**
- **Rotary Winged aircraft checking in with LEG IRON on 310.0 may be directed to utilize MAWTS-1 published Control Points in order to remain clear of Camp Billy Machen Naval Special Warfare Training active small arms ranges within R-2507 N/W.**
- **Approved ordnance delivery profiles can be found within the MCAS Yuma RFMSS library IAW USMC Safety Policies and Procedures.**
- **RFMSS shall be utilized as the primary scheduling tool and available for operational units allowing units to conduct training within restricted airspace.**

**RESTRICTED AIRSPACE**

# R-2301W

- **R-2301W may be scheduled separate and/or concurrent as follows:**
  - **TACTS HI:6-50K**
  - **TACTS LO:200'AGL-5K**
  - **TACTS LO:0-200'AGL \*(USCBP/DHS helo's may operate if airspace is not scheduled)**
  - **CACTUS WEST 0-5K/6-15K/0-15K/15-20K(to work the 15-20K block unit must have 0-15K block scheduled)**
    - **Aircrews may utilize one or more of the following target areas:**
      - **Cactus West Bullseye (311.85)**
      - **Yodaville UTC (290.1) \*separately scheduled event**
      - **Scoring must be requested via RFMSS and will be available on TGT frequency with Yuma WISS. Requesting unit please follow up with phone at (928) 269-1668/1669.**
  - **AUX II AIR 0-1200'AGL**
  - **USCBP/DHS CORRIDOR (see slide 17): USCBP/DHS helos routinely operate 200'AGL and below as follows:**
    - **.5 NM buffer along southern border of Cactus West**
    - **1 NM buffer along southern border of TACTS LO**
  - **Cabeza Prieta National Wildlife Refuge (see slide 15) exclusion area in southeastern corner of R-2301W. Minimum altitude 1500'AGL.**
  - **VFR exclusion area 3000'and below at northern boundary of TACTS LO.**





# Search & Rescue/MEDEVAC

**MCAS YUMA DOES NOT HAVE A DEDICATED SEARCH AND RESCUE/MEDEVAC CAPABILITY.**

**\*If notified of an emergency medical situation, Leg Iron will request a civilian air ambulance to support the transport of injured personnel off range spaces, with the following notable limitations.**

**The Civilian AIR AMBULANCE:**

- **Does NOT provide a “SEARCH AND RESCUE” function.**
- **Has “LIMITED” night-time capability & NO NIGHT SUN Device/Search Light on-board.**
- **Is only able to access “IMPROVED” or prepared areas within the Range Training Area.**
- **LZ’s are pre-coordinated and largely inflexible pickup zones.**
- **Restricted to flat surfaces outside of IMPACT AREAS & mountainous terrain.**
- **Operates on a “FIRST COME, FIRST SERVE” basis with NO contractual obligation to prioritize MCAS YUMA requests over any other request (this includes any private sector requests).**
- **Can only provide air ambulance services to one person at a time.**
- **Is NOT hoist equipped.**
- **Will transport injured personnel to different locations and NOT necessarily the closest i.e. PALM SPRINGS, SAN DIEGO, or PHOENIX.**

# **REQUIREMENT FOR FLIGHT WITHIN YUMA RANGE TRAINING COMPLEX**

- **All “Participants” must REMAIN within APPROVED/SCHEDULED airspace.**
- **Installation Boundaries/Restricted Airspace Boundaries are not the same. Ordnance expenditures are only authorized within designated impact areas. There are no “targets of opportunity.”**
- **Yuma ATC will actively pursue ANY spill-outs, including VFR.**
- **Pilots must be familiar with the MCAS Yuma StaO 3710.6\_. With particular focus on Chapter 4. The Range SOP can also be found in the RFMSS Library or sent by request from Range Scheduling ([yuma.skeds@usmc.mil](mailto:yuma.skeds@usmc.mil)).**
- **Triple check for guided munitions ICW a FAC/JTAC for weapon targeting validation per TECOM guidance (Aircrew may use: aircraft sensors, data links, coordinate read back, etc.).**

# RESTRICTED AIRSPACE ACCESS





# **RESTRICTED AIRSPACE ACCESS**

- **All Rotary Winged aircraft (Non Tilt-Rotor) seeking access to R-2301W, R-2507, R-2510A/B and R-2512 will check in with “LEG IRON” on frequency 310.0.**
- **LEG IRON will coordinate clearance and assignment of Mode III to Rotary Winged platforms seeking access to restricted airspace.**
- **Rotary Winged aircraft checking in with LEG IRON on 310.0 may be directed to utilize MAWTS-1 published Control Points in order to remain clear of active small arms ranges within R-2507N/W.**

# TACTICAL LANDINGS WITHIN THE MCAS YUMA RTA



## • Assault LZ Deuce Village

- **UNITS ASSUME INHERENT RISKS OF LANDING AIRCRAFT IN ZONES WITHIN THE YUMA RANGE COMPLEX.**
- **The Installation is not equipped to offer assurances that one landing zone is safer than another.**
- **Any risk associated with landing in the MCAS Yuma RTA are to be assessed by the using unit and aircraft commander prior to conducting operations and/or landing within the range.**
- **Due to the density of operations, MCAS Yuma will not close the range outside scheduled Live Fire Exercise pre sweeps in order to make this assessment.**
- **This includes the rangeland maintenance associated with cutting back micro-terrain and vegetation.”**

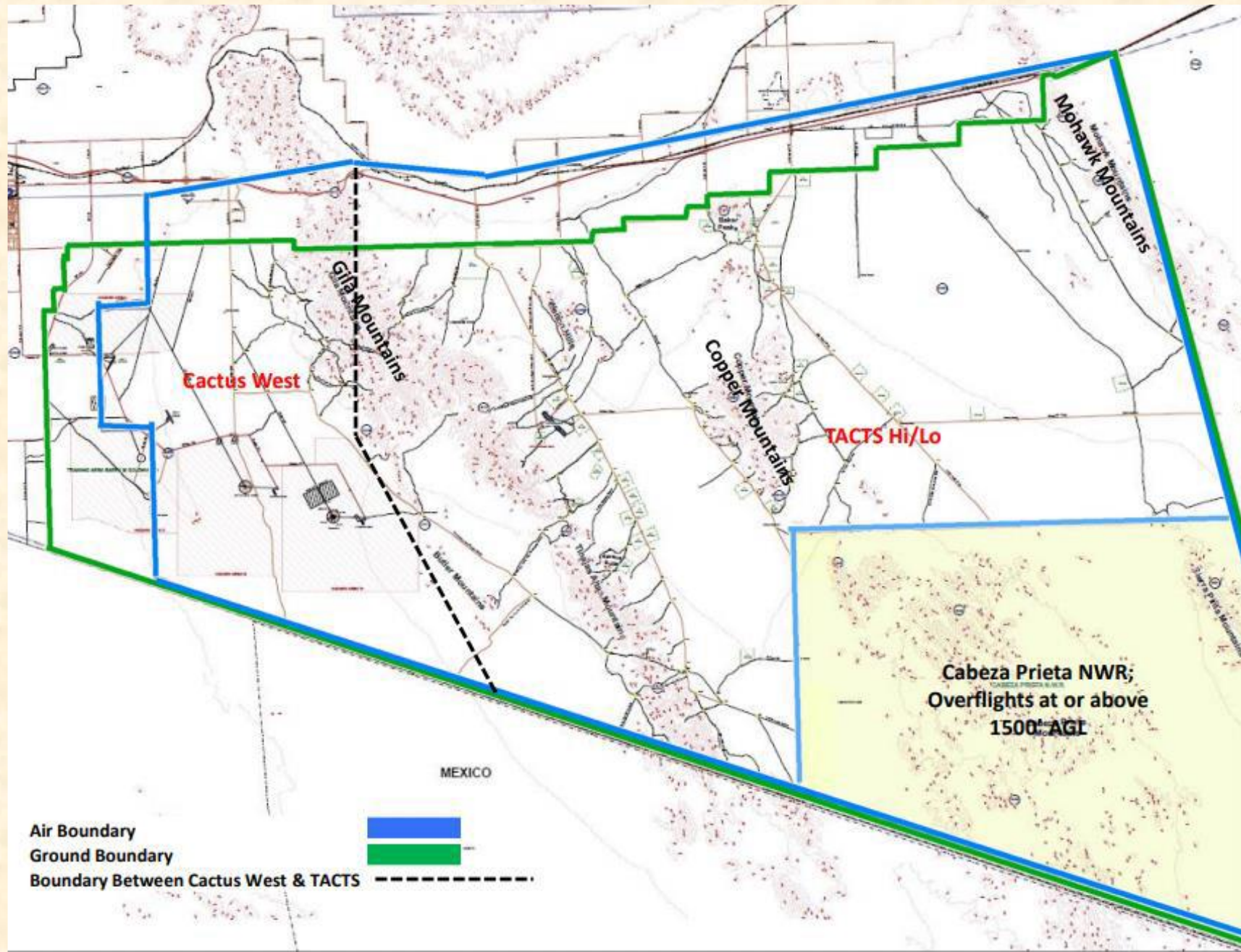




# **R-2301 WEST CONTAINMENT**

- **There is NO airspace authorized for training South of the International Border!**
- **You will be advised of incursions into Mexico only one time. Second incursion shall result in having range time revoked and the unit will be told to depart the range.**
- **Northern Boundary of R-2301W parallels V 66/J2.**

# R-2301 WEST





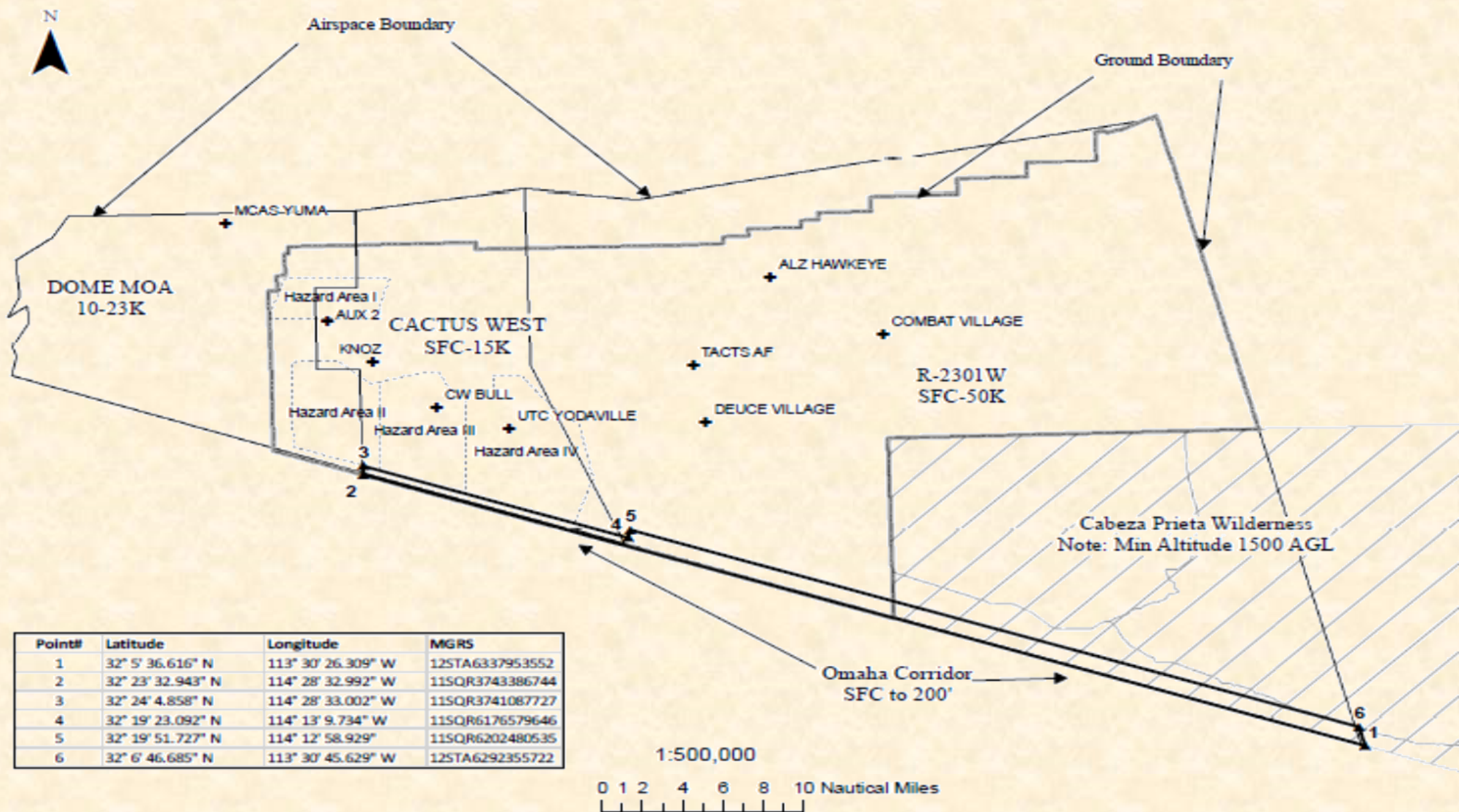
# R-2301W CACTUS WEST

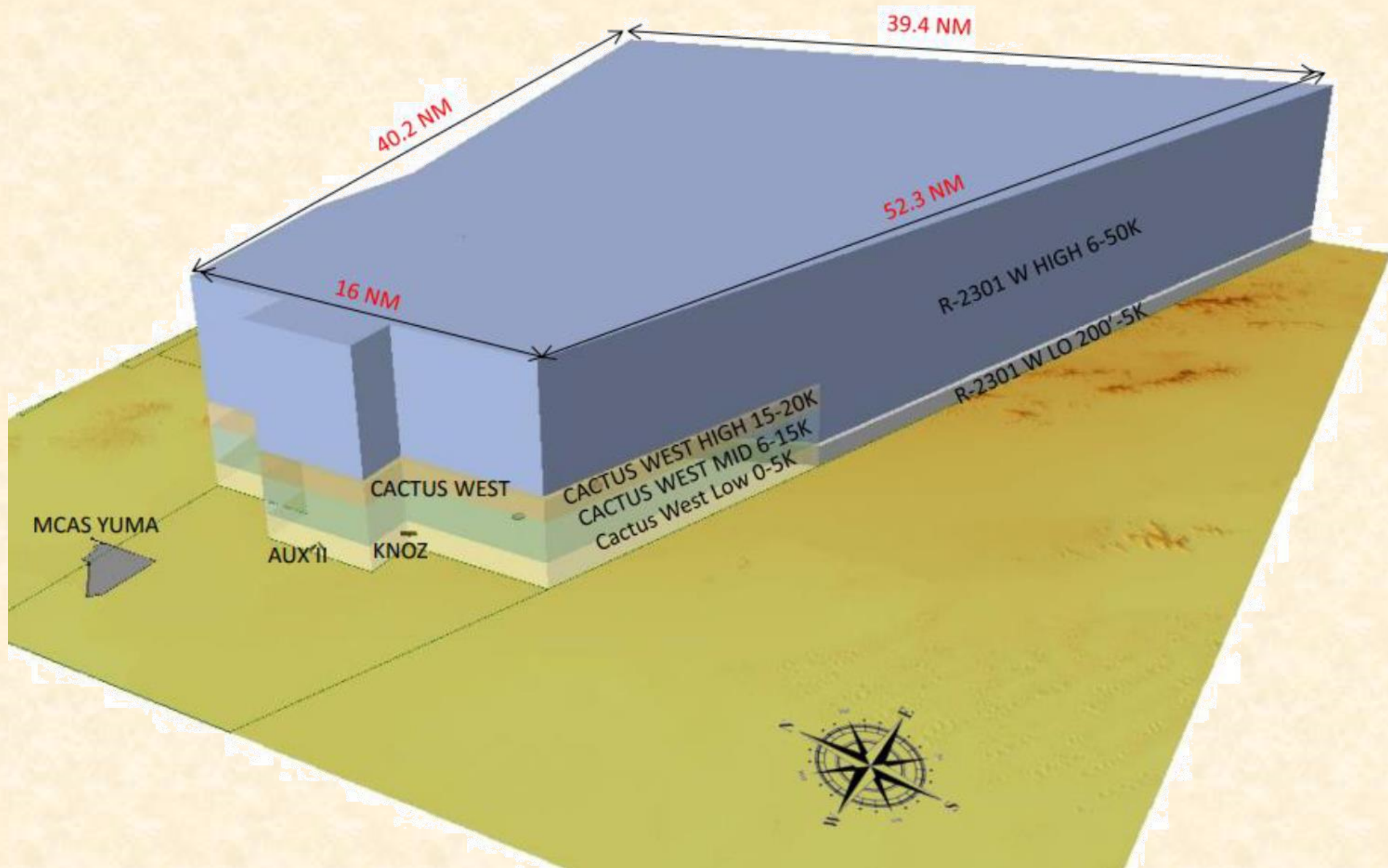


\* MCAS Yuma

Aircraft should to the maximum extent practical,  
avoid over flight of this residential area.  
Per StaO 3710.6\_

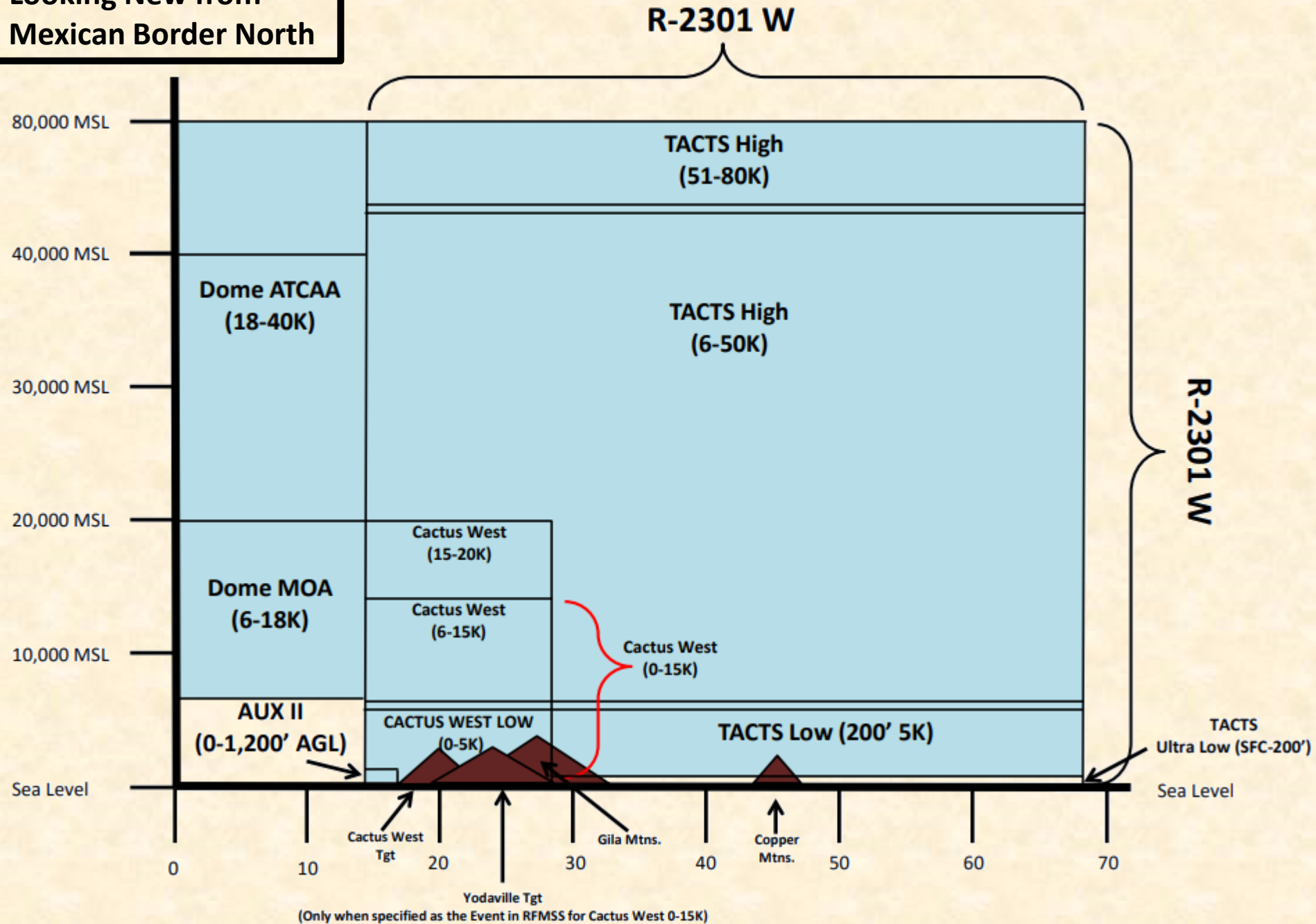








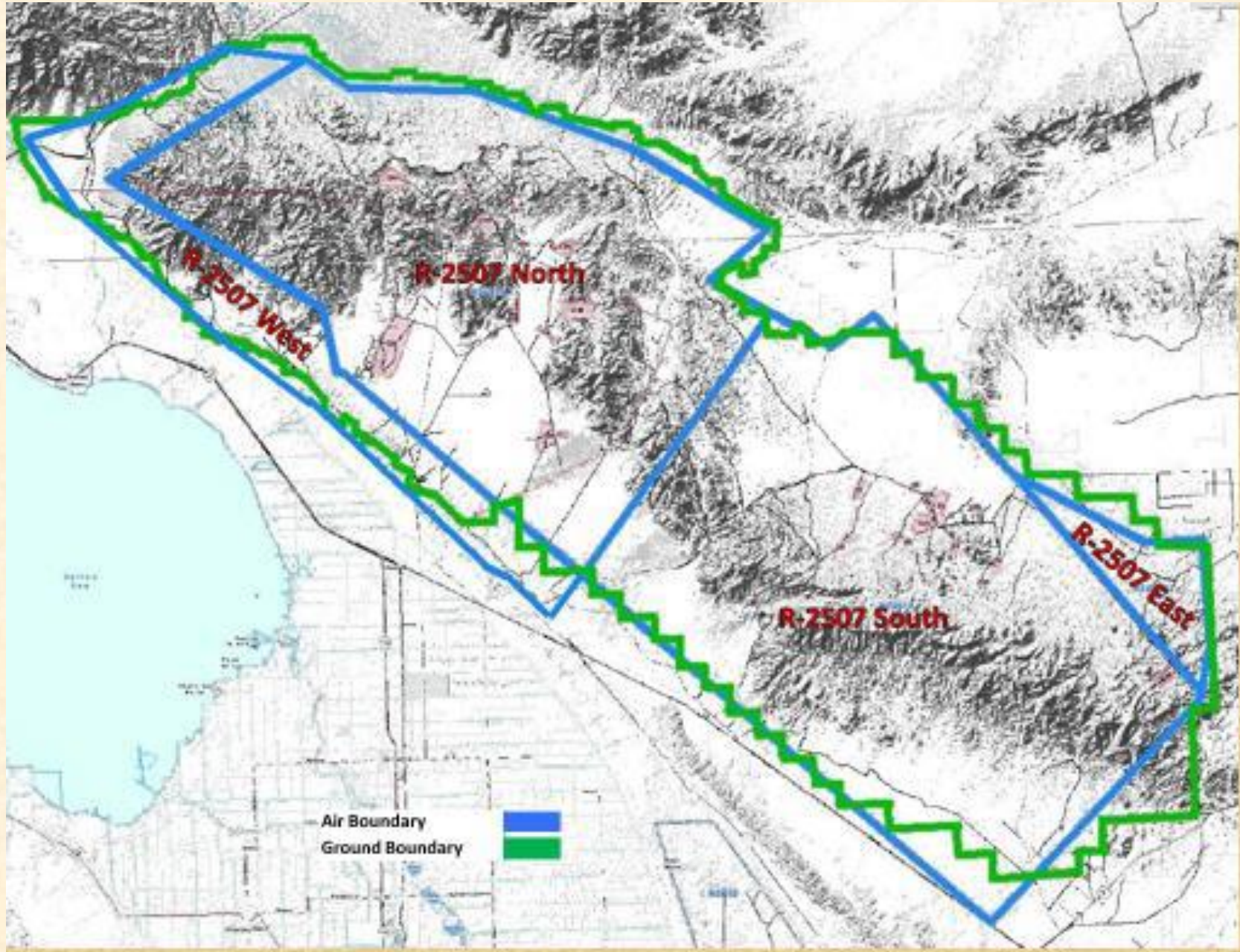
Looking New from  
the Mexican Border North



# **R-2507N/S/E/W**

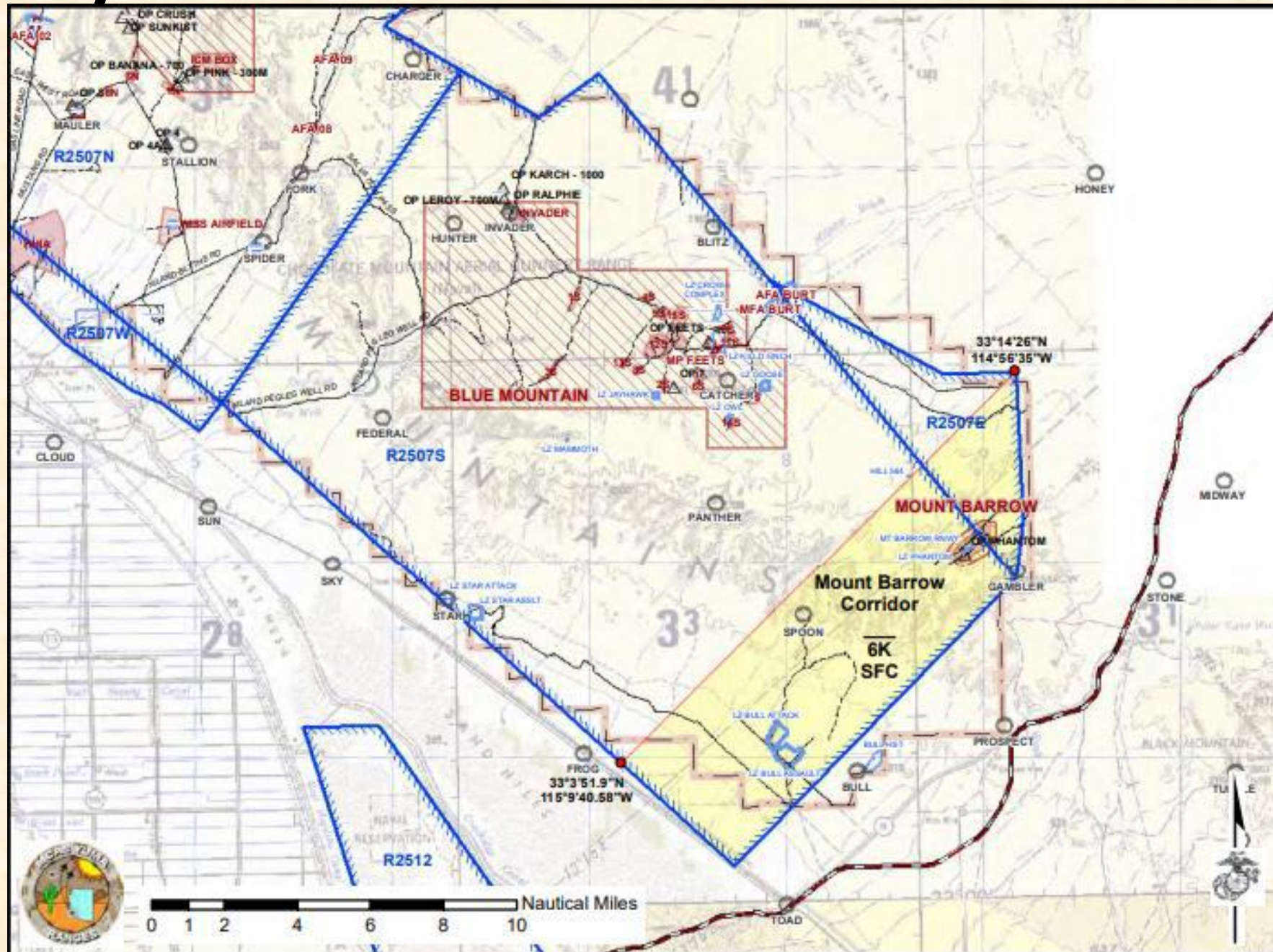
- **Range Boundaries...Adhere!**
- **If Abel MOA's were not scheduled, aircrew may request from Yuma Range (276.0) 7-23K MSL.**
- **Abel N MOA and R2507N border parallel J-169.**

# R-2507N/S/E/W





# R-2507 S/E: BLUE MT & MT BARROW CORRIDOR



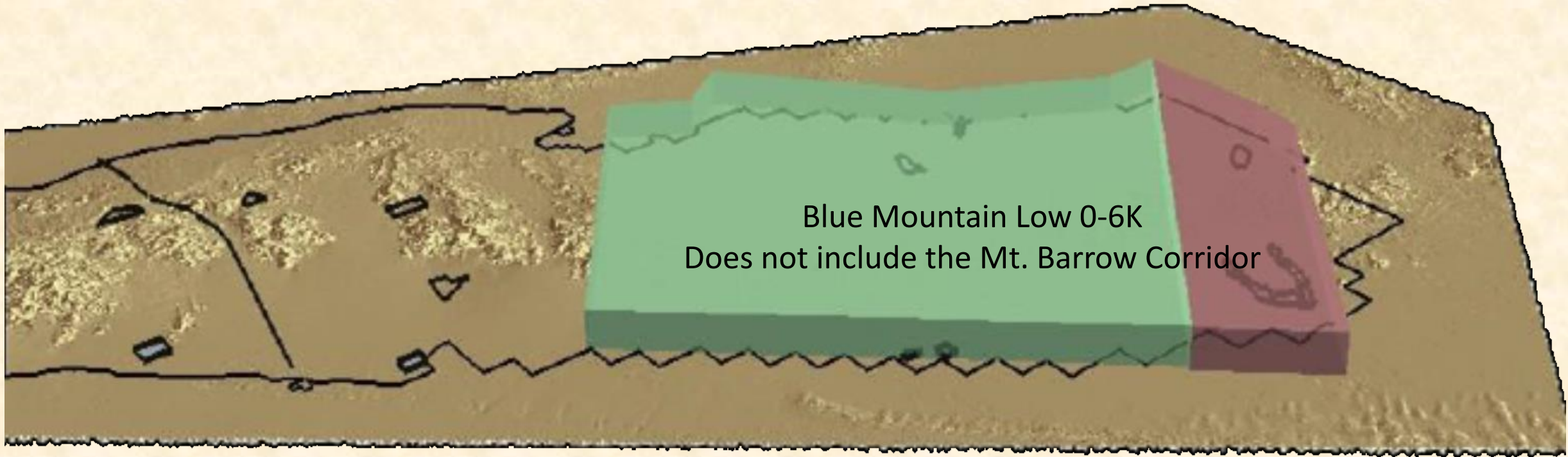


The map displays the Blue Mountain Low and Mount Barrow Corridor in Alaska. Key features include:

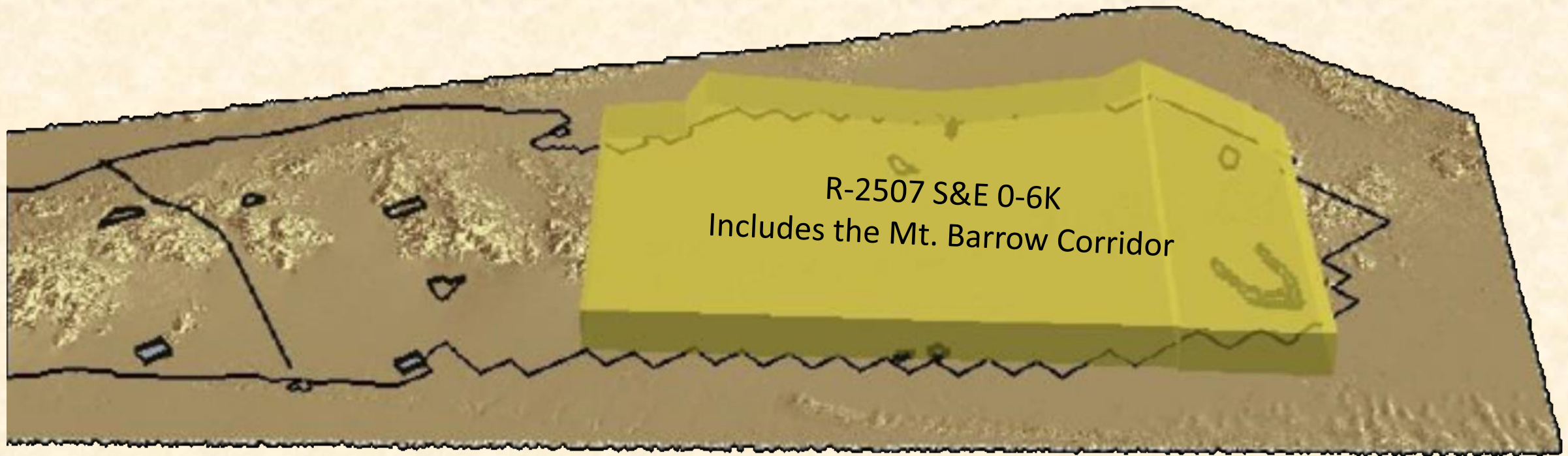
- Blue Mountain Low:** A large area outlined in blue, labeled "Blue Mountain Low" and "R2507S". It includes the "6K SFC" (Sixth Air Force) and "R2507W" and "R2507E" regions.
- Mount Barrow Corridor:** A yellow-shaded area labeled "Mount Barrow Corridor" and "6K SFC".
- Geographical Features:** The map shows the Arctic coastline, including the Bering Sea and the Chukchi Sea. Key locations include Barrow, Wainwright, and Utqiaġvik.
- Military Operations:** Numerous operations are marked, including "OP KARCH - 1000", "OP LEROY - 700M", "OP RALPHE", "OP INVADER", "OP HUNTER", "OP BURT", "OP MFA BURT", "OP MEETS", "OP MP FEETS", "OP CATCHER", "OP SKY", "OP STAR ATACK", "OP STAR ASSET", "OP PROG", "OP BULL ATACK", "OP BULL ASSET", "OP BULL", "OP TOAD", "OP STONE", "OP MIDWAY", "OP CLOUD", "OP SUN", "OP SKY", "OP STAR ATACK", "OP STAR ASSET", "OP PROG", "OP BULL ATACK", "OP BULL ASSET", "OP BULL", "OP TOAD", "OP STONE", "OP MIDWAY", "OP CLOUD", "OP SUN", "OP SKY".
- Airfields:** Several airfields are marked, including "MAULDER", "STALLION", "PORK", "SPIDER", "HUNTER", "INVADER", "BLITZ", "AFABURT", "MFA BURT", "AFABURT", "MFA BURT", "AFABURT", "MFA BURT".
- Scale and Orientation:** A scale bar at the bottom indicates distances in Nautical Miles (0 to 10). A north arrow is located in the bottom right corner.



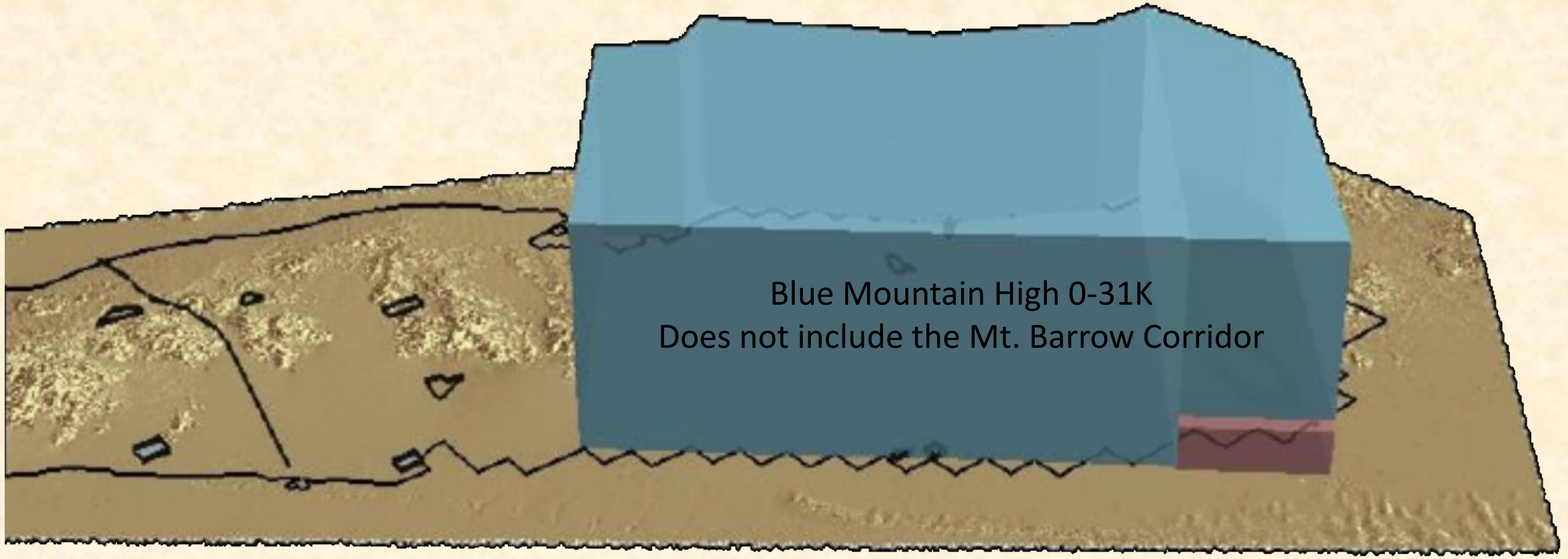
# Blue Mountain Low 0-6K



# R-2507 S & E 0-6K



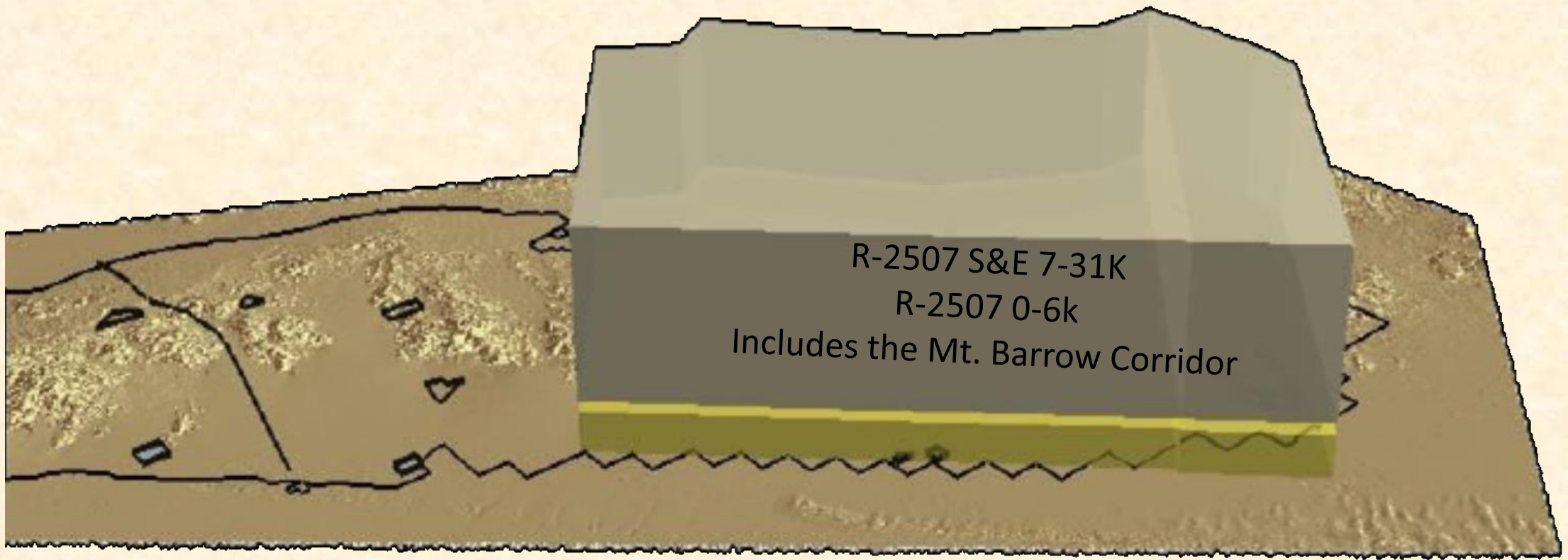
# Blue Mountain High 0-31K



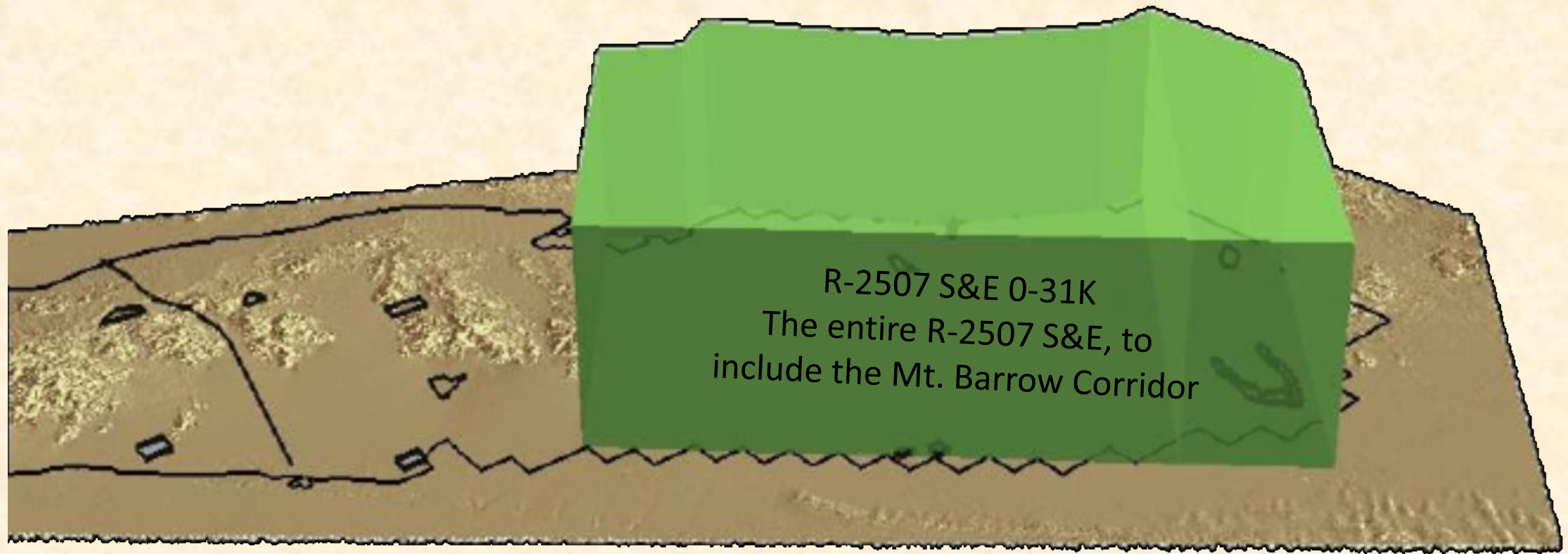
Blue Mountain High 0-31K  
Does not include the Mt. Barrow Corridor



# R-2507 S & E 0-6K and 7-31K



# R-2507 S & E 0-31K





# INTERLOPERS WITHIN THE RANGE

- Interlopers frequently interrupt training throughout the MCAS RTA.
- Interlopers can be Scrappers, Undocumented Aliens, Recreation, or Non participating Civilian or Government entities.
- If encountered within R-2507 (N/S/W) or R-2301W; Operator shall provide Leg Iron with any information that that can be captured visibly and pass information when able:
  - License plate
  - Vehicle type



- Sensor footage/screen shot that captures vehicle within DoD managed property.
- MCAS Yuma will coordinate with SJA for prosecution of observed trespassers.
- Information can be passed, via phone, email upon post flight or real time if situation permits.



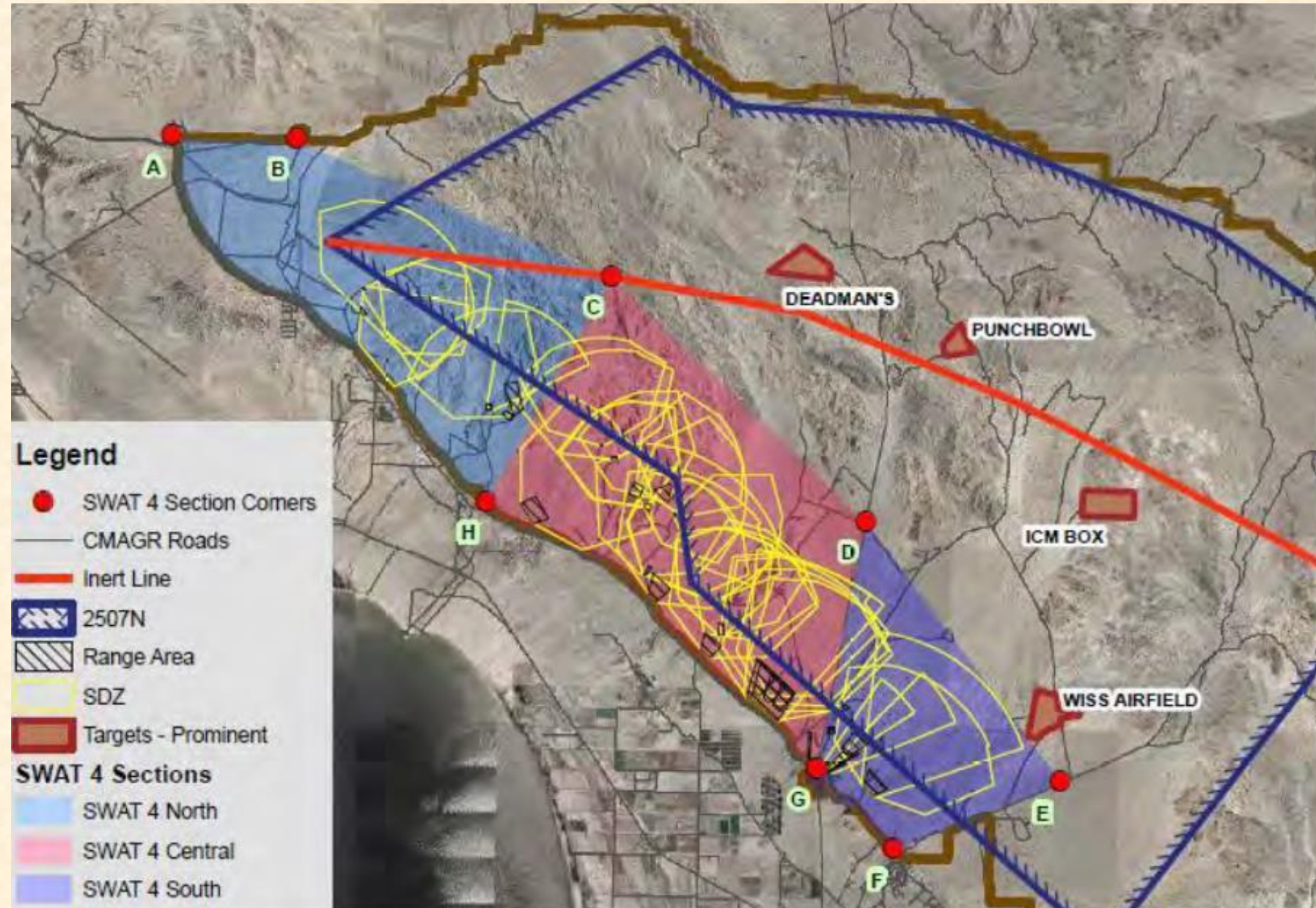
# NAVAL SPECIAL WARFARE TRAINING





# SPECIAL WARFARE TRAINING AREAS(SWAT)

- Located within the R2507 W Airspace.
- The SWAT ranges are used primarily by NSWG-1/SOCOM/USMC to conduct Small Arms Fire, Mortar Fire, Demo, and UAS operations.

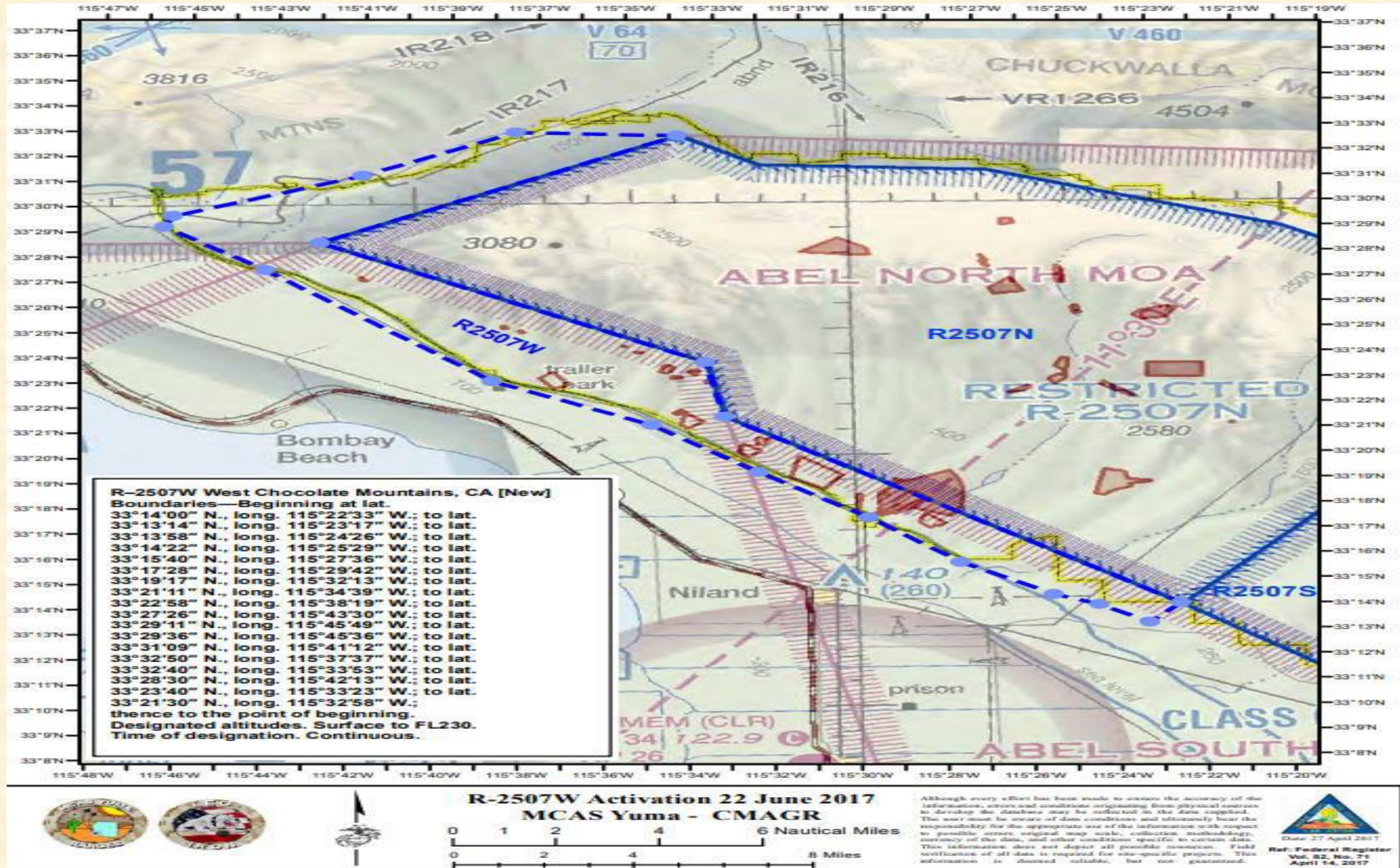




# **SPECIAL WARFARE TRAINING AREAS**

- **R-2507W Low will automatically be active from SFC to 6K MSL whenever the SWAT Ranges are scheduled for ground training.**
- **All aircraft seeking access to R-2507N will be advised the status of R-2507W Low/SWAT 4 Ranges.**
- **R-2507W Low/SWAT 4 is partitioned into North/Central/South sections.**
- **Fixed wing aircraft checking in with YUMA RANGE on 276.0 will be advised of which SWAT section, or combination of SWAT sections are in an active status within R-2507W Low.**
- **Aircraft shall remain clear of these active sections of SWAT 4.**

# R-2507 WEST



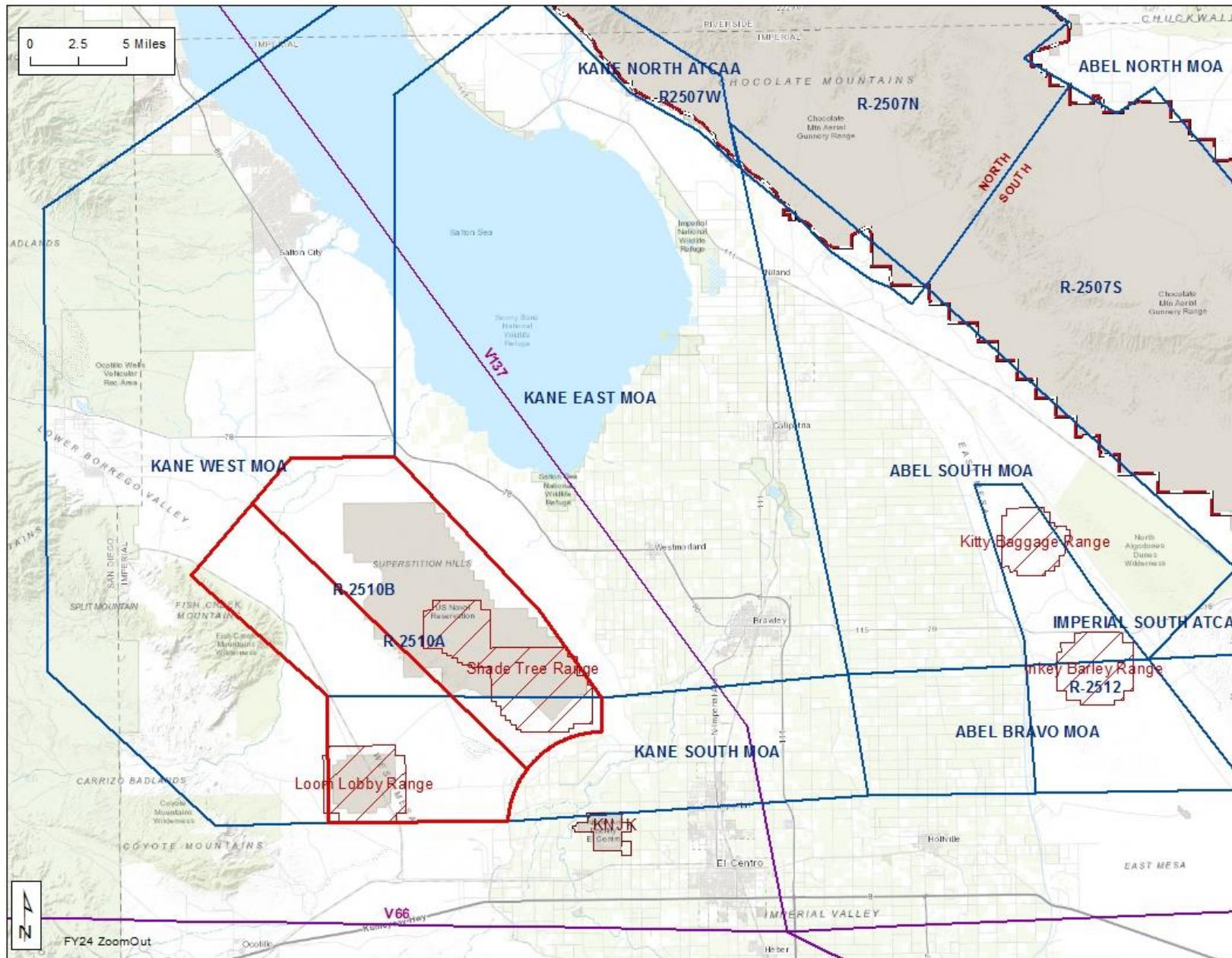


# **SPECIAL WARFARE TRAINING AREAS**

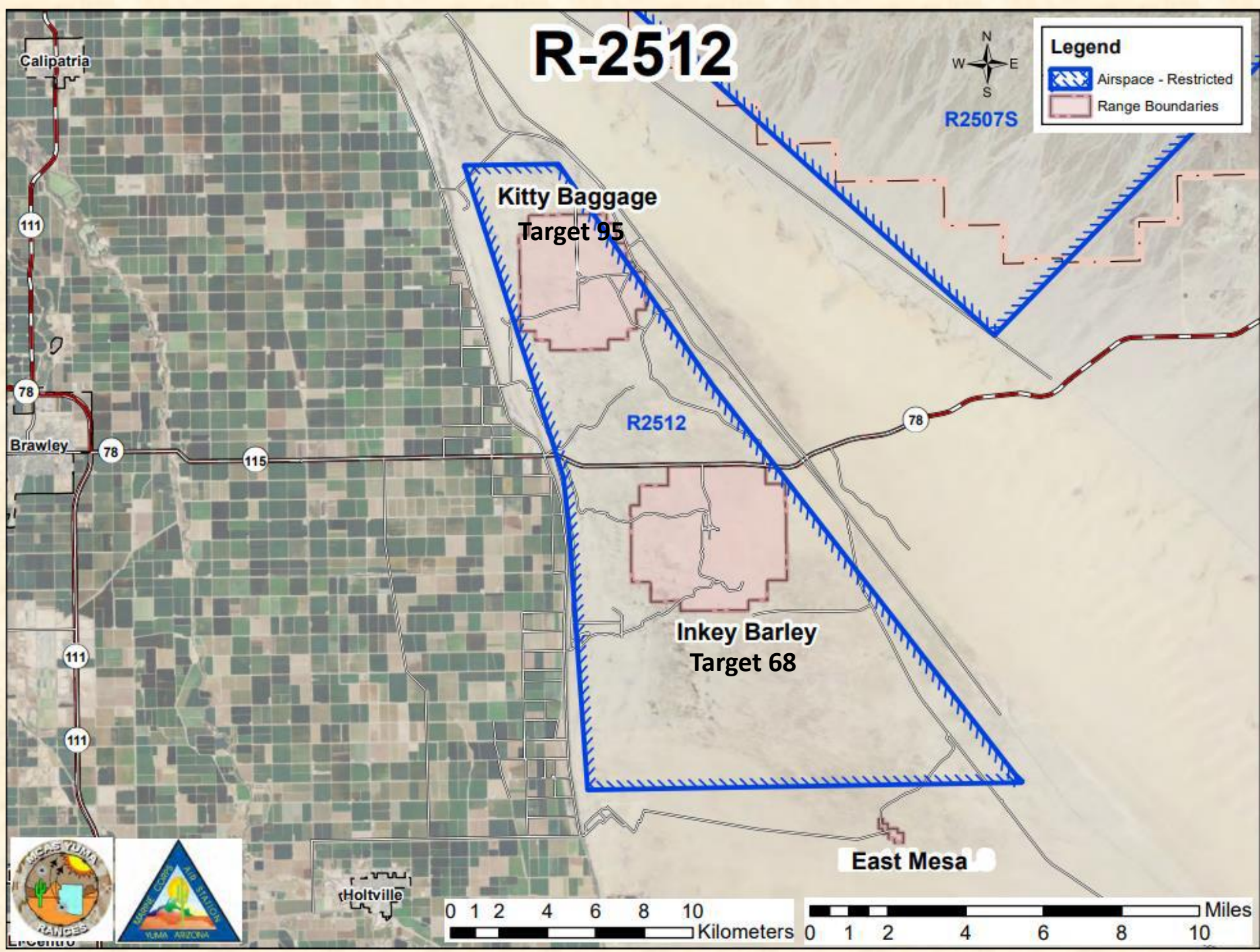
- **All scheduled R-2507W/SWAT 4 training can be viewed by checking RFMSS two week calendar.**
- **Contact LEG IRON at (928)269-7080 prior to mission to confirm R-2507W/SWAT 4 range status.**
- **Rotary Winged Aircraft will be advised by LEG IRON (310.0) of the active SWAT areas and receive entry/exit instructions to avoid.**



The map displays the San Diego County Airports System with various airports and flight paths. Key airports include Kane North ATCAA, Kane East MOA, Kane West MOA, Kane South MOA, Abel North MOA, Abel South MOA, and Imperial South ATCAA. Flight paths are labeled with codes such as R-2507W, R-2507N, R-2507S, R-2510B, R-2510A, R-2512, and R-2511. The map also shows geographical features like Chocolate Mountains, San Diego County, and various valleys. A scale bar indicates 0, 2.5, and 5 miles. A north arrow is present in the bottom left corner.







# R-2512

- **R-2512 may be scheduled separate and/or concurrent as follows:**
  - **R-2512: 0-18K/19-23K (to work the 19-23K block unit must have 0-18K block scheduled)**
  - **Aircrews may utilize one or more of the following target areas:**
    - **TGT 68 Inkey Barley (264.7)**
    - **TGT 95 Kitty Baggage (265.8)**
- **Scoring must be requested via RFMSS and will be available on TGT frequency with El Centro WISS. Requesting unit please follow up with phone at (760) 339-2238.**



# R-2510A/B

- Rotary wing may schedule the R-2510A separately and/or concurrent as follows:
  - R-2510 LOOM LOBBY(LL)LOW 0-6K
  - R-2510 SHADE TREE(ST)LOW 0-6K
  - R-2510 ST/LL LOW 0-6K
- Fixed Winged Aircraft may schedule the R-2510A as follows:
  - R-2510 ST/LL LOW/HIGH 0-15K
  - R-2510 ST/LL HIGH 7-15K
- Aircrews may utilize one or more of the following target areas:
  - TGT 101 Shade Tree (283.2)
  - TGT 103 Kitty Baggage (306.75)
- Scoring must be requested via RFMSS and will be available on TGT frequency with El Centro WISS. Requesting unit please follow up with phone at (760) 339-2238.
- R-2510B 15-40K for fixed wing aircraft (Only available on weekends when reserved 48 hours in advance).

# **R-2510A/B INFORMATION**

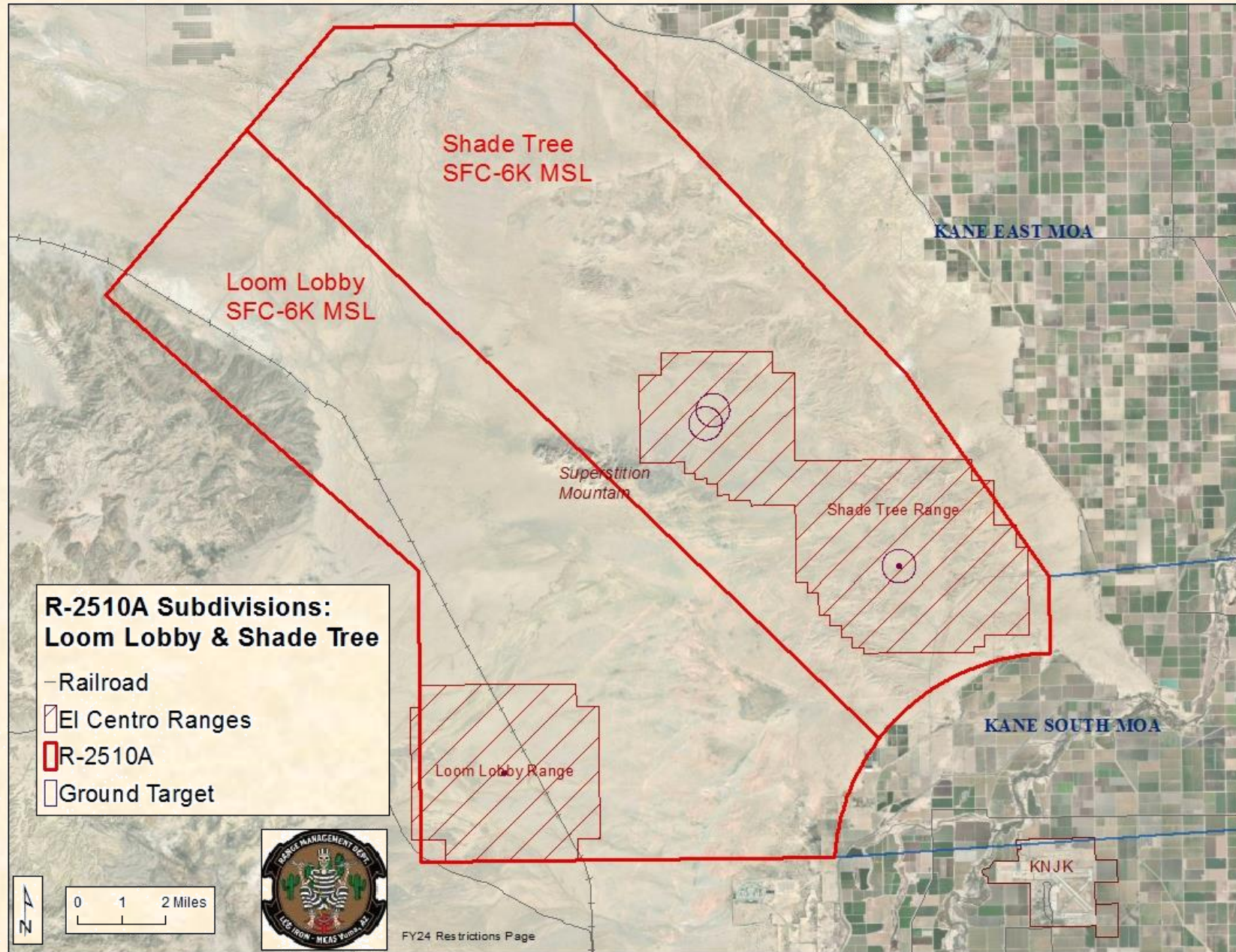
- **An active mining railroad track transverses the western portion of R-2510 in between Loom Lobby Range on the western side and Desert Training Area One (DTA-1) on the eastern side. The railroad tracks are not part of either Loom Lobby or DTA-1. The train runs 2-4 times daily, carrying mined materials from the Fish Creek Mountains north of R-2510 to a manufacturing plant in Plaster City south of R-2510.**
- **Unauthorized personnel routinely trespass onto and foul the West Mesa RTAs within R-2510. Any mission interrupted or aborted due to a fouled range shall be immediately reported to LEG IRON or EL CENTRO APPROACH (YUMA CERAP).**
- **Shade Tree is located approximately 8.5 miles northwest of NAFEC along the northern side of the Superstition Mountains within R-2510A & encompasses 15,216 acres.(6,157 ha) of USMC-controlled training area and USN owned lands.**
- **The main bullseye is equipped with WISS and four cardinal direction electric lighting for night bombing.**
- **WARNING: An active public county road (Huff / Imler) bisects Shade Tree. The road is not part of either the Shade Tree Range. Ensure all ordnance remain inside the range boundary.**
- **Avoid the V-66 airway located just south of the R-2510A.**

# **R-2510 GROUND OPERATIONS**

- **POC for approval of R-2510 Live Fire Training Operations and ground access:**
  - **MCAS Yuma Range Control Officer/[john.gordon@usmc.mil](mailto:john.gordon@usmc.mil)/928-269-6488**
- **Ground personnel seeking access to R-2510, Shade Tree (TGT 101) or Loom Lobby (TGT 103) shall contact Leg Iron via Land Mobile Radio (LMR).**
- **Ground Units: Shall have an approved Ground Request through Range Management/Yuma Scheduling Office.**
- **Contact LEG IRON (via Land Mobile Radio LMR or if emergent, by phone at (928-269-7080).  
Provide location, number of personnel, and duration of stay.**
- **Ordnance has been dropped on the range over the last 60 years. Potential UXO may be found throughout the range. No entry shall be permitted without prior coordination with MCAS Range Scheduling. For “Same Day” ground requests, all units shall contact Leg Iron for approval. Exercise extreme caution when transiting on paths or roads not routinely traveled, as UXO is continually unearthed.**
- **All UXO should be considered dangerous. Inert or practice ordnance may contain an explosive charge designed to mark a point of impact. Off-road activities should be conducted with extreme caution due to the potential presence of UXO. Vehicles shall drive IAW 3710.6\_ published limits.**



# R-2510 AIRPACE SUBDIVISIONS AND TGTS





# R-2510 SCHEDULED AIRSPACE



R-2510A MAY BE SCHEDULED SEPARATE AND/OR CONCURRENT FOR  
ROTARY/FIXED WINGED AIRCRAFT AS FOLLOWS:

- R-2510 LOOM LOBBY(LL)LOW 0-6K
- R-2510 SHADE TREE(ST)LOW 0-6K
- R-2510 ST/LL LOW 0-6K
- R-2510 ST/LL LOW/HIGH 0-15K
- R-2510 ST/LL HIGH 7-15K

Loom Lobby Range

Shade Tree Range



# GENERAL INFORMATION

- **“LEG IRON” Hours of Operation: 0630-2300 Mon-Fri & 0630-1700 Sat-Sun (AZ Local Time).**
- **“Yuma RANGE” (YUMA CERAP/ATC) Hours of Operation: 24/7**
- **For Yuma WISS coordination, schedule request via RFMSS and follow up with phone at (928) 269-1668/1669.**
- **For El Centro WISS coordination, schedule request via RFMSS and follow up with phone at (760) 339-2238.**
- **Further information on MCAS Yuma Range regulations can be found within the MCAS Yuma RFMSS Library or at the Yuma range notifications page -<http://www.Mcasyuma.Marines.Mil/resources/range-notifications/>.**

# CHECK-OUT PROCEDURES





# MISSION COMPLETE

**All aircraft employing ordnance on targets within Yuma Range Training Complex will, upon checkout, provide quantity, type and target area where ordnance was expended. Aircrews may utilize one or more of the following target areas:**

- **Blue Mountain TGT -1S, 2S, 3S, 4S, 5S, 6S, 7S, 8S, 10S, 11S, 12S, 13S, 14S, 15S**
- **Punch Bowl TGT -2N, 9N, 10N, 11N, 14N**
- **Dead Man CAS Range TGT -3N**
- **IRIS Wash TGT -1N, 6N, 7N, 13N**
- **ICM Box**
- **WISS Airfield TGT -15N**
- **Mt Barrow (Rotary Wing/Tilt-Rotor only)**
- **Cactus West Bullseye Yodaville UTC**
- **R-2512 – Kitty Baggage TGT 95 and Inkey Barley**
- **R-2510 A/B - Loom Lobby TGT 103 and Shade Tree TGT 101**

# SUMMARY

- **Check In/Out Procedures**
- **Rotary-Winged Aircraft Restricted Airspace Access**
- **Restricted Airspace:**
  - **R-2301W**
  - **R-2507N/S/E**
  - **R-2507W**
    - **Camp Billy Machen and Naval Special Warfare Training**
    - **SWAT Ranges**
  - **R-2512**
  - **R-2510 A/B**
- **Interlopers Within the Range**
- **General Information**



**QUESTIONS?**

**Intentionally Left Blank**